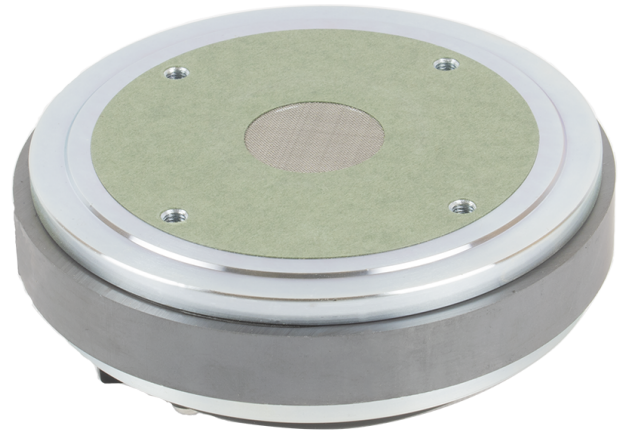


KEY FEATURES

- 1,4" (36 mm) high frequency compression driver
- 2,85" (72,4 mm) voice coil diameter
- 140 W program power above 1,5 kHz
- High sensitivity: 107 dB (1W / 1m)
- Titanium dome with polyester surround
- Lightweight edgewound aluminum ribbon voice coil
- Ferrite magnet



TECHNICAL SPECIFICATIONS

Nominal diameter	36 mm	1,4 in
Rated impedance		8 Ω
Minimum impedance		6,9 Ω
D.C. resistance		5,5 Ω
Power capacity ¹	50 W _{AES} above 0,8 kHz	
	70 W _{AES} above 1,5 kHz	
Program power ²	100 W above 0,8 kHz	
	140 W above 1,5 kHz	
Sensitivity ³	107 dB 1W / 1m @ Z _N	
	coupled to TD-385	

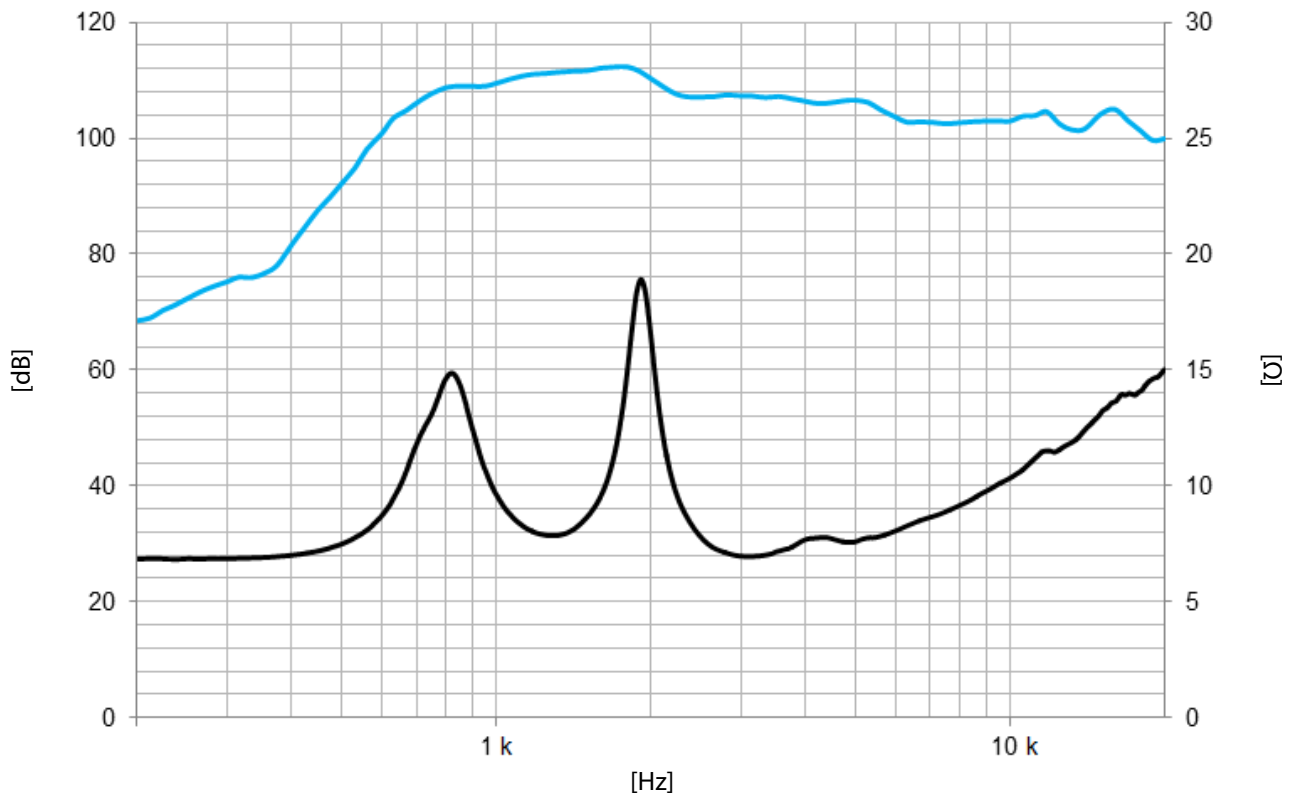
Frequency range		0,7 - 18 kHz
Recommended crossover		0,8 kHz or higher (12 dB/oct min.)
Voice coil diameter	72,4 mm	2,85 in
Magnetic assembly weight	4,1 kg	9,0 lb
Flux density		1,55 T
BI factor		8,8 N/A

Notes:

¹ The power capacity is determined according to AES2-1984 (r2003) standard.

² Program power is defined as the transducer's ability to handle normal music program material.

³ Sensitivity was measured at 1m distance, on axis, with 1W input, averaged in the range 1 - 7 kHz



Note: On axis frequency response measured coupled to TD-385 horn in anechoic chamber, 1W / 1m

MOUNTING INFORMATION

Overall diameter	156 mm	6,1 in
Depth	66 mm	2,6 in
Mounting	Four M6 threaded holes, 90° apart on 101,6 mm (4 in) diameter circle	
Net weight	4,2 kg	9,2 lb
Shipping weight	4,7 kg	10,3 lb

DIMENSION DRAWING

