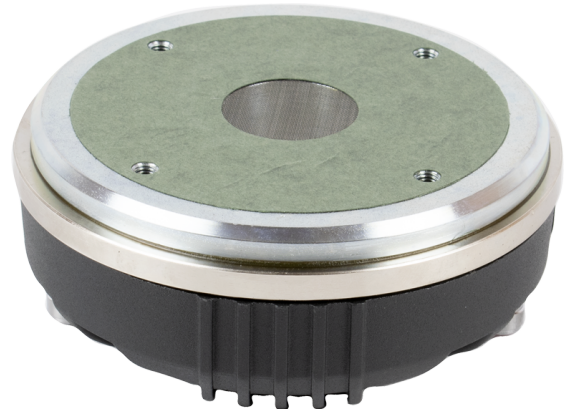


KEY FEATURES

- 1,4" exit (36 mm) high frequency compression driver
- 2,85" (72,4 mm) voice coil diameter
- 160 W program power above 1,5 kHz
- Sensitivity: 110 dB (1W / 1m)
- Shorting copper cap for extended response
- Titanium dome with polyester surround
- Lightweight aluminium voice coil
- Aluminium cover
- Neodymium magnet



TECHNICAL SPECIFICATIONS

Nominal diameter	36 mm	1,4 in
Rated impedance		8 Ω
Minimum impedance		7,1 Ω
D.C. resistance		5,5 Ω
Power capacity ¹	60 W _{AES} above 0,8 kHz	
	80 W _{AES} above 1,5 kHz	
Program power ²	120 W above 0,8 kHz	
	160 W above 1,5 kHz	
Sensitivity ³	110 dB 1W / 1m @ Z _N	
	coupled to TD-365	

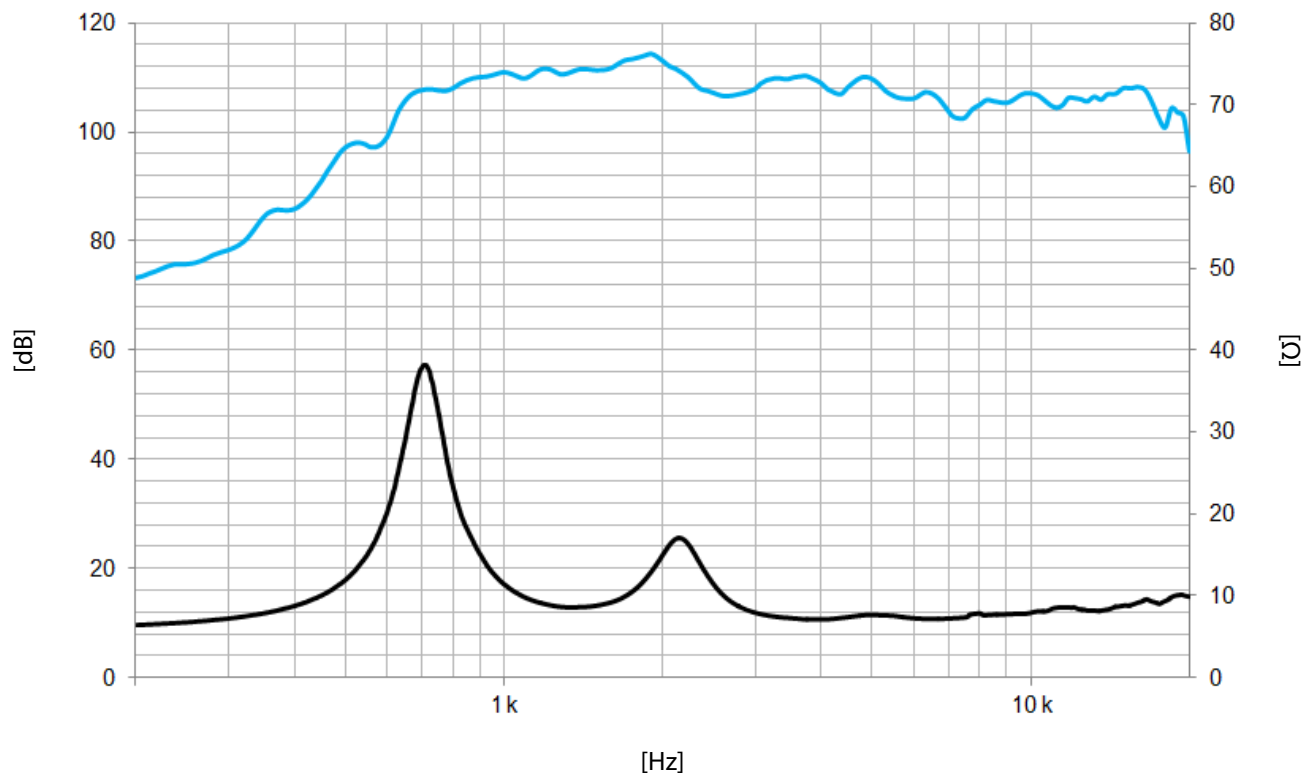
Frequency range		0,6 - 20 kHz
Recommended crossover		0,8 kHz or higher (12 dB/oct min.)
Voice coil diameter	72,4 mm	2,85 in
Magnetic assembly weight	2,7 kg	5,9 lb
Flux density		2,2 T
BI factor		11,5 N/A

Notes:

¹ The power capacity is determined according to AES2-1984 (r2003) standard.

² Program power is defined as the transducer's ability to handle normal music program material.

³ Sensitivity was measured at 1m distance, on axis, with 1W input, averaged in the range 1 - 7 kHz



Note: On axis frequency response measured coupled to TD-365 horn in anechoic chamber, 1W / 1m

MOUNTING INFORMATION

Overall diameter	145 mm	5,7 in
Depth	66 mm	2,6 in
Mounting	Four M6 threaded holes, 90° apart on 101,6 mm (4 in) diameter circle	
Net weight	2,9 kg	6,5 lb
Shipping weight	3,2 kg	7,1 lb

DIMENSION DRAWING

